

1

954

РОМЕО и ДЖУЛЬЕТТА

2-я СЮИТА

С. ПРОКОФЬЕВ

Violino I

I. Монтекки и Капулетти

Andante

con sord.

div.

con sord.

ppp

pp

Allegro pesante

senza sord.

ppp

pp

unis.

f pesante

f marcato

f pesante

f

Violino I

A1

ff *6* *1*

f *ff*

f *pesante*

f

7 Moderato tranquillo
pizz. *pp* *pp* *7*

8 con sord.
arco *pp*

pp *7*

9 Allegro pesante
senza sord. *mp* *pp* **10**

f *pesante* *mf*

f *espr. ma marcato* *ff*

ff *3* *1* *4* *A* *3* *7*

vl 1

MASKS

arco

p

6

mp

11

cresc.

f

15

cresc.

f

19

mf

dim.

p

gettando l'arco

p

24

gettando l'arco

spiccato

p

mp

29

33

cresc.

f

mf

36

Lento

dim.

p

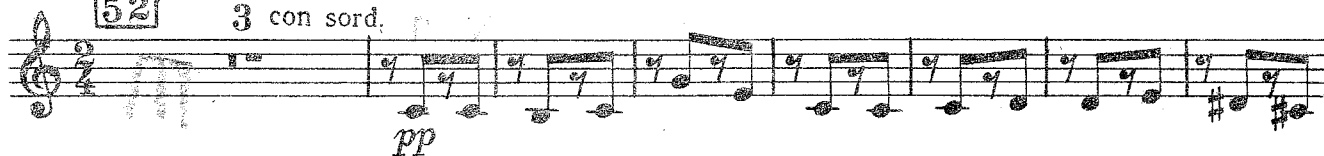
VI. Танец антильских девушек

Violino I

Andante con eleganza

52

3 con sord.



53

Solo con sord.

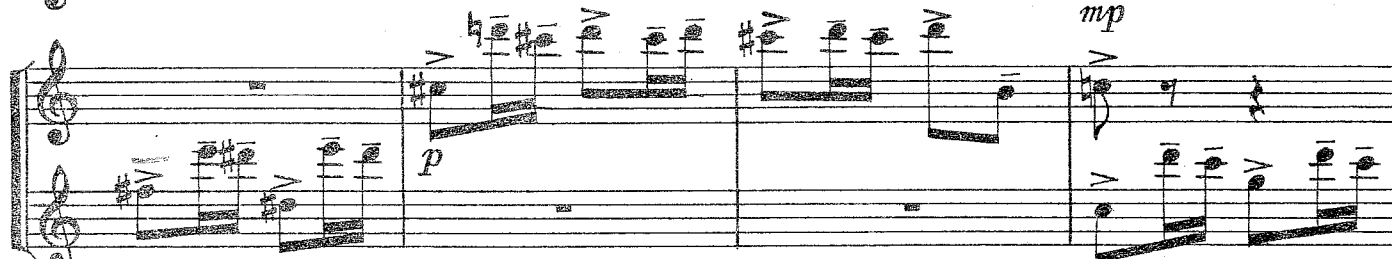
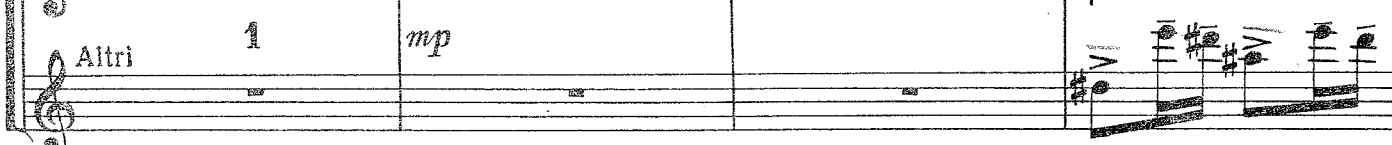


Solo

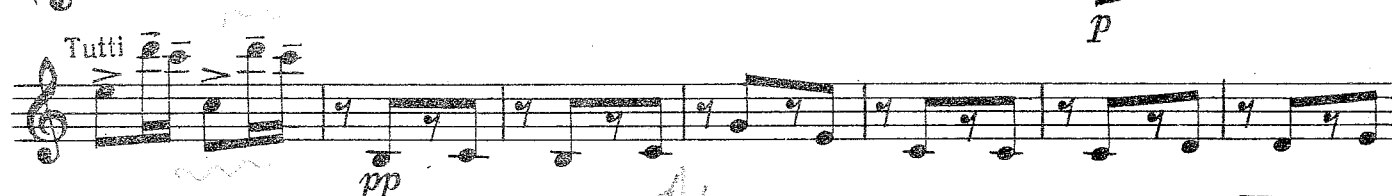
Altri

1

mp



Tutti

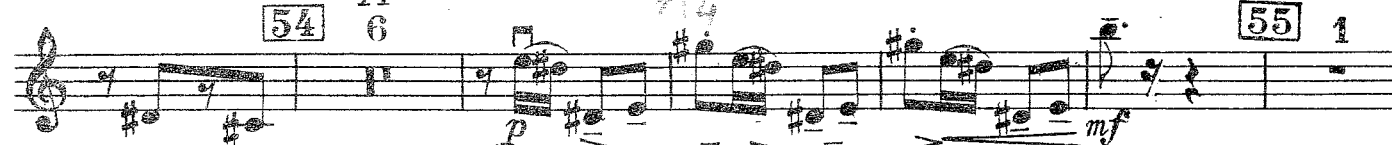


54

6

55

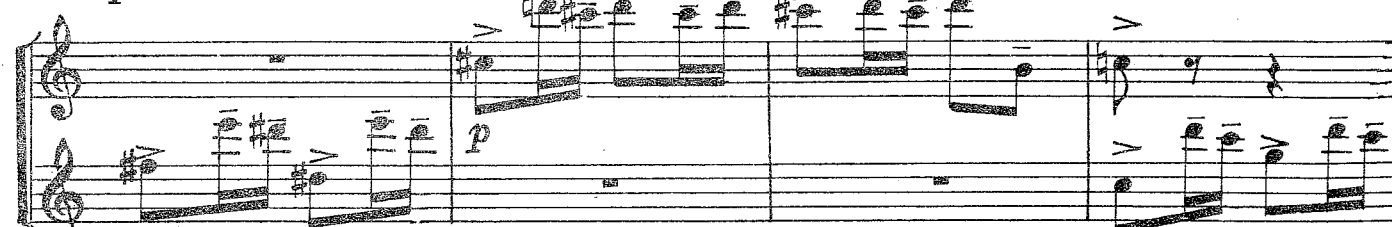
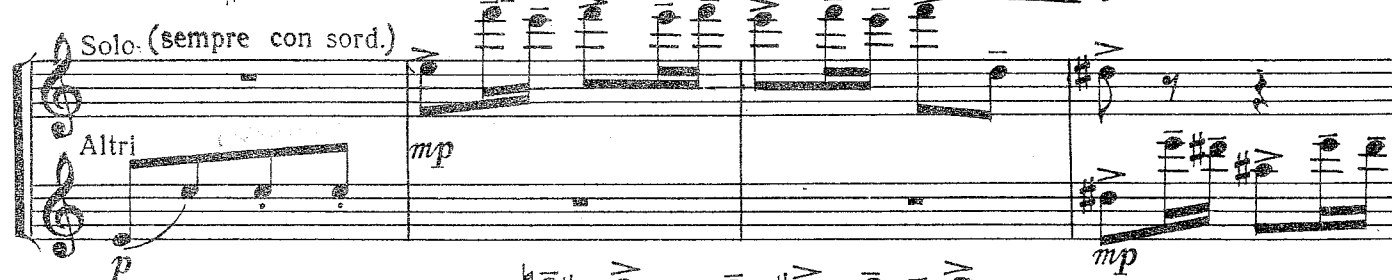
1



Solo (sempre con sord.)

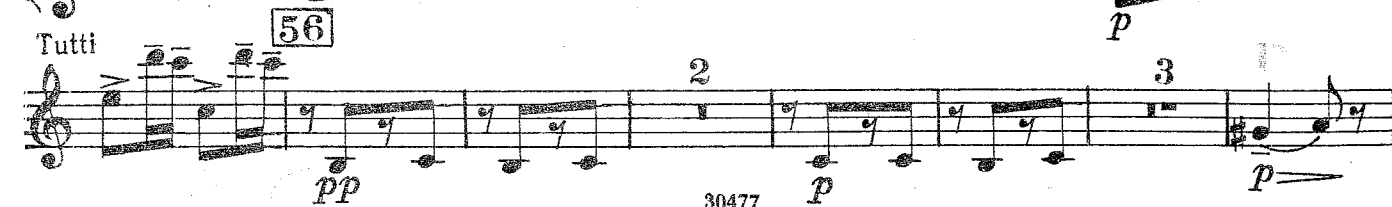
Altri

mp



Tutti

56



VII. Ромео у могилы Джульетты

Violino I

57 Adagio funebre

senza sord.

*mf molto espr. e dolente**mp**mf**mp*

58

*p**mf**p subito*

59

div.

*f**non div.*

60

*plzz.**ff*

arco

61

mf espr.

62

div.

*p**mf**mp**p**mf**mp*

3

Violino I

63 unis. *f* molto espr. *mp* *p* cresc. espr.

64 *ff* *ff* *Poco più mosso*

65 *p* *f* *mp* *ff*

66 *f* ben tenuto *ff* *poco rit.* 3

67 Adagio *pp* dolcissimo *div.* *pp* dolcissimo

pp *pp*